



“Integrated e-learning course for SMEs and trainers of Post Harvest Technology focused on improved marketability of indigenous, tropical and subtropical, fruits and vegetables”

Research Training Workshop on Facilitating uptake by SMEs of Research on New Processing Technologies for Underutilised Fruits. 13th - 15th May, 2013, Kandy, Sri Lanka.
Faculty of Agriculture, University of Peradeniya, Sri Lanka

Submitted by :

NagaLaxmi M. Raman

Amity International Centre for Post Harvest Technology
& Cold Chain Management,

Amity University Uttar Pradesh,

Sector-125, Expressway, Noida, India

www.amity.edu/aicpht



E-Learning Platforms to Manage Training

- E-Learning ideally complements the classical teaching methodology by providing :

- interactivity
- evaluation and feedback capabilities, and
- integration of multiple media formats (animation, video, audio, interactive activities, etc.).



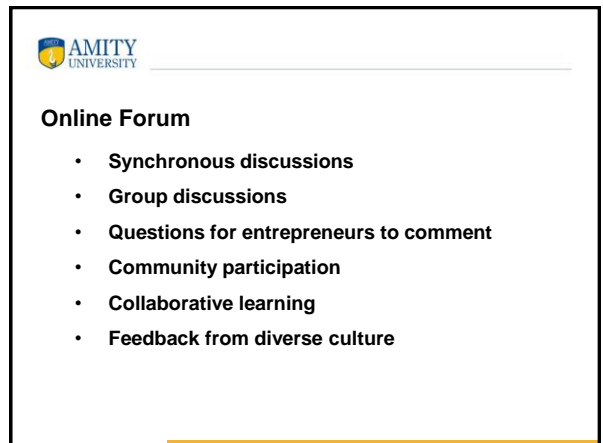
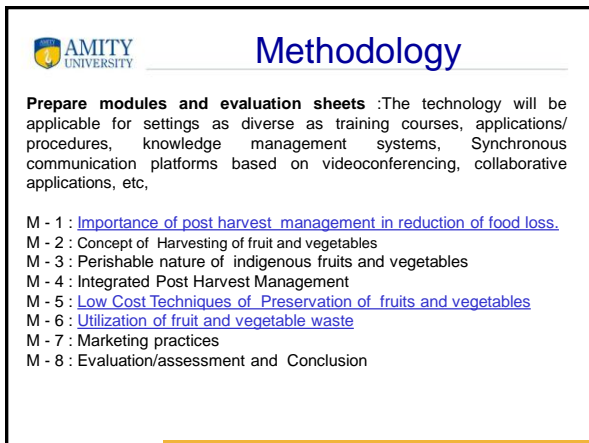
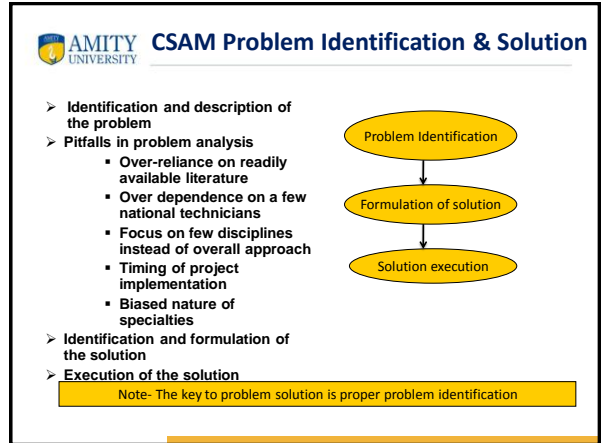
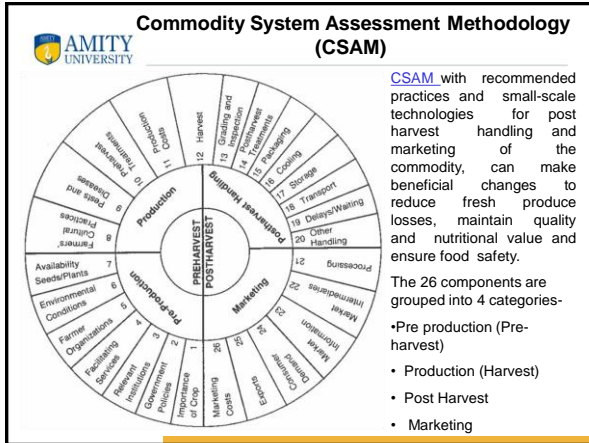
Traditional and E-learning approaches

	Traditional Classroom	E-Learning
Classroom	<ul style="list-style-type: none"> • Physical – limited size • Synchronous 	<ul style="list-style-type: none"> • Unlimited • Anytime, anywhere
Content	<ul style="list-style-type: none"> • PowerPoint/transparency/ etc • Textbooks/library • Video • Collaboration 	<ul style="list-style-type: none"> • Multimedia / simulation • Digital library • On demand • Syn & Asyn. Communication
Personalisation	<ul style="list-style-type: none"> • One learning path 	<ul style="list-style-type: none"> • Learning path and pace determined by the learner



Objectives

- Testing the applicability of the e-learning model in the Integrated Post Harvest Management.
- Designing, development, and implementation of e-learning system for the SMEs and farm trainers laying emphasis on greater spread and use of technologies in everyday life
- Dissemination of technology through the integrated system of tools and human mind in implementing the overall process of knowledge management in the organizational context of the rural sector
- Creation of network for training of farmers by transfer of technology for increasing market share and reduction of cost of production and including 100% utilization of the produce.





WEB

- **Wide range of available teaching resources**
- **Sharing of resources supported by**
 - **images,**
 - **audio,**
 - **simulation and**
 - **multimedia**



Video Conference

- Live lecture supported by audio, chat and whiteboard
- Communication with entrepreneur /trainers
- Sharing of applications
- Recordable and reusable lectures
- Demo



Monitoring and Evaluation

- Many of the issues and challenges associated with e-learning is lack of good monitoring and evaluation tools and processes.
- Often quantitative data related to infrastructure are emphasized rather than data that can help the impact of e-learning interventions on the farm trainers/SMEs.
- If e-learning has to become effective, an integral tool is accountability.
- Therefore, in the project ,the best way to manage resource usage on an ongoing basis is to have a time-sheeting system.
- Resource usage will be monitored on a weekly/monthly/quarterly basis by using online time-sheet system at specific task levels.



Sustainability of the action:

- This project would result in the implementation of a set of postharvest technologies that will be cost effective and appropriate for reducing losses by keeping perishable produce fresh in case of indigenous fruits and vegetables for longer period or processing them into durable products to fetch a better return.
 - An integrated post harvest management approach will achieve for the target population
 - (i) Better market access
 - (ii) Nutrition Security
 - (iii) Poverty alleviation
 - (iv) Employment generation
 - (v) Environment protection
 - (vi) Economic transformation of rural population.
- In fact, every farmer can utilize a substantial amount of indigenous fruits and vegetables by adopting simple techniques of storage, preservation and processing to uplift their livelihood.

AMITY UNIVERSITY		The training and workshop plan					
SNo	Activity	Location	Foreign Resource Persons	No. Of Training in a Year	Host country Resource Persons	Local Participants	Training groups
1	Training – cum Workshop – (3 Days)	India	4 (2 each from Sri Lanka and Bangladesh)	2	8	50	2 groups (25 in each group)
2	Training – cum Workshop – (3 Days)	Sri Lanka	4 (2 each from Bangladesh and India)	1	0	50	2 groups (25 in each group)
3	Training – cum Workshop – (3 Days)	Bangladesh	4 (2 each from Sri Lanka and India)	1	0	50	2 groups (25 in each group)
4.	3 –day Conference-cum-Seminar	India	4 (2 each from Sri Lanka and Bangladesh)	0	10	75	0
5	Reporting, Monitoring and Evaluation						

AMITY UNIVERSITY		Short term Course Work	
Part – I : Post Harvest Technology of Fruits and Vegetables			
T - 1 : Introduction To Fruits And Vegetables			
T - 2 : Causes of Post Harvest Losses of Fresh Fruits And Vegetables			
T - 3 : Importance of Maturity and Harvesting of Fruits and vegetables			
T - 4 : Washing, cleaning, sorting, and grading			
T - 5 : Safety and Quality Awareness			
Part – II : Storage and Marketing of Fruits and Vegetables			
T - 6 : Different Storage System of Fresh Fruits and Vegetables.			
T - 7 : Packaging, Transportation and Marketing			
Part – III : Processing of Fruits and Vegetables			
T - 8 : Primary / Minimal Processing of Fruits and Vegetables.			
T - 9 : History and Importance of food processing of fruits and vegetables			
T - 10 : Principles and methods of preservation			
T - 11 : Drying and Dehydration of Fruits and Vegetables			
T - 12 : Preparation and preservation Fruits and vegetables products			

